



# Foxhills

**Foxhills Country Club**  
**Longcross Course - Phase 2**

**October 2023**





## LONGCROSS – PHASE 2 RENOVATION PLAN



## Hole 1

The Longcross course begins with a lengthy downhill par 4 with a fairway that slopes gently from right to left.

The ideal tee shot is straight towards the green. The single fairway bunker on the left is too short to trouble better players and its sole purpose is to catch poor or misdirected tee shots.

As with many of the greens at Foxhills the green is protected by two bunkers positioned front right and front left of the green. These bunkers are penal in nature, don't contribute significantly to the strategy, falling short of creating meaningful decision-making challenge for golfer.

## Design Proposal

The goal is to design a more strategic golf hole, demanding a more considered tee shot to set up the best approach to the green.

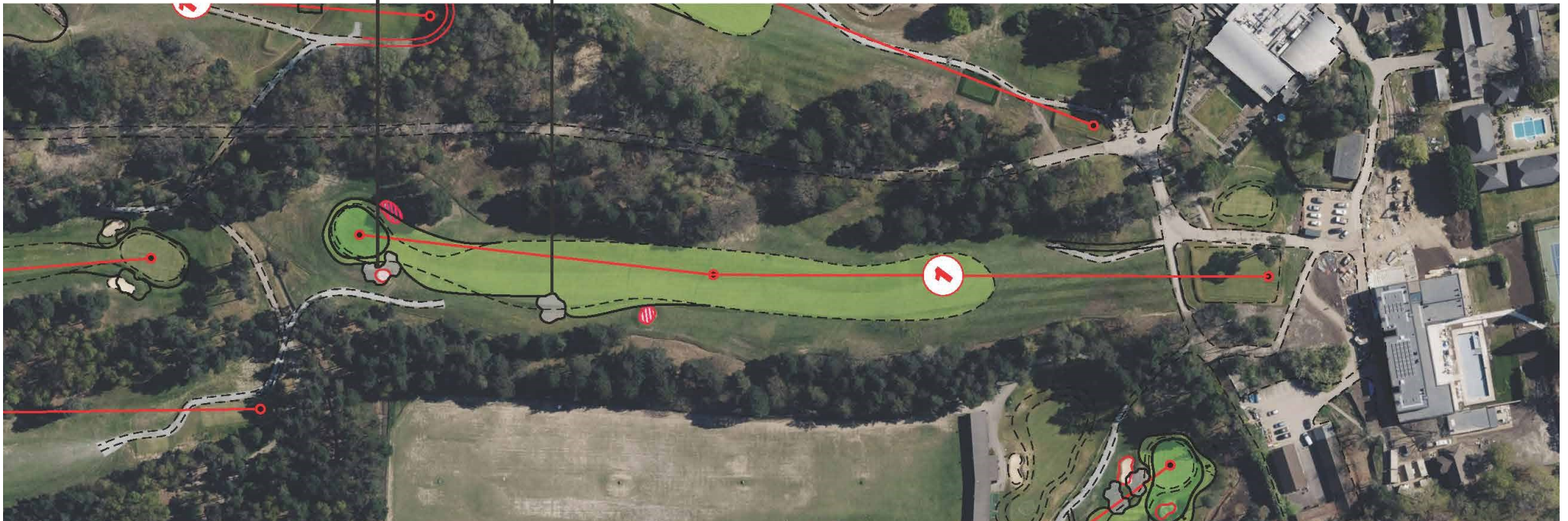
The fairway bunker on the left would be eliminated, and a new bunker would be positioned closer to the landing area of better golfers. The front right greenside bunker would be completely removed, while the left greenside bunker would be enlarged and made more imposing and moved closer to the putting surface.



## HOLE 1 - PROPOSAL

Reshape left bunker and move closer to the green.  
Remove right greenside bunker

Relocate fairway further along the golf hole





**HOLE 1 - PROPOSED APPROACH**





## Hole 8

A short par-4 that features a sharp dog-leg left and a green complex guarded by bunkers at the front right and front left. A single fairway bunker protects the dog-leg at the point where most players will be looking to lay up.

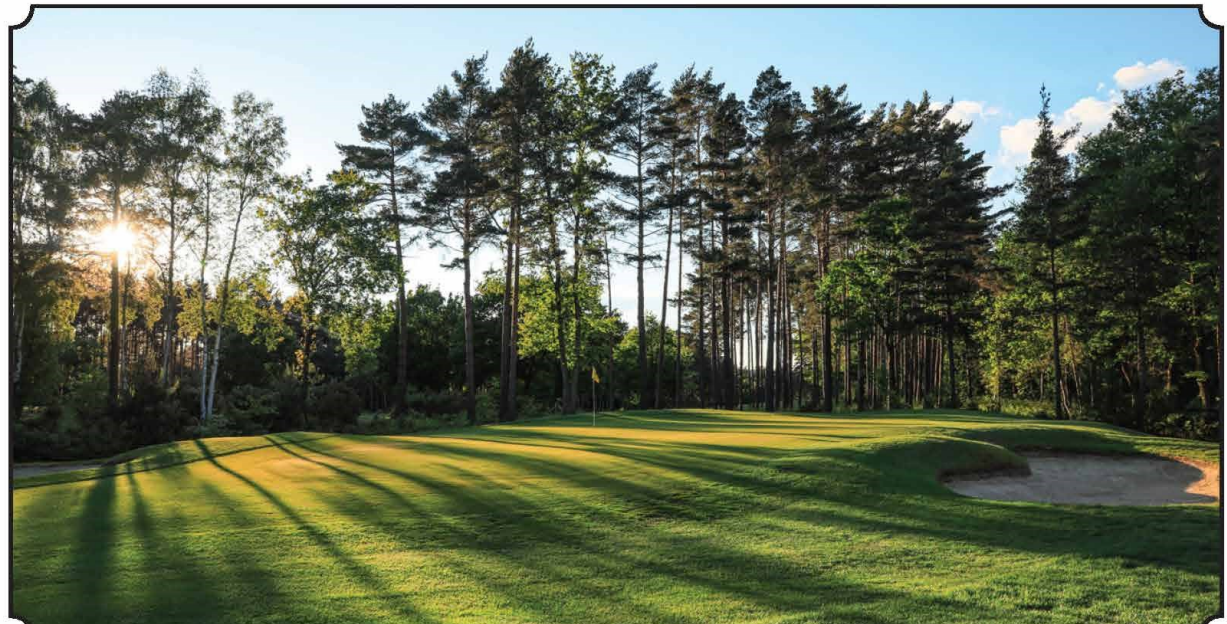


## Design Proposal

Widening the left side of the fairway will make it more appealing for golfers to attempt to drive over the corner rather than just laying up around the 180-200 yard mark.

An additional fairway bunker will be added to defend more of the landing area.

Adjusting the placement of the greenside bunkers will enhance the strategic aspects of the entire hole. Shifting the left greenside bunker to the right and extending the left bunker 5-10 meters further will place greater emphasis on the tee shot placement. A golfer aiming to position their drive close to or beyond the second fairway bunker will be rewarded with a better line into the green compared to those who choose to lay up short of the bunkers.



## HOLE 8 – PROPOSAL

Repositioned and shaped greenside bunkering

Reshaped and repositioned fairway bunker

New fairway bunker set into slope





## HOLE 8 - PROPOSED TEE SHOT







## Hole 9

A lengthy par-4 hole that plays over a prominent ridgeline before doglegging to the left. A single bunker guards the inside of the dogleg but is only partially visible from the tee. The second shot plays downhill to a small complex situated over a drainage channel that crosses in front of the approach. Although the drainage channel is lined with wooden sleepers, it remains unseen from the landing area. The very small green is once again defended by a bunker at the front right and front left. The green surface slopes significantly from back to front, rendering a large portion of the green unpinable.

It's worth noting that the short game practice green is positioned very close to the 9th approach. Despite partial protection by large pine trees, there is a risk of users being struck by wayward approach shots aimed at the 9th green.

## Design Proposal

The existing fairway bunker would be reshaped to make it bolder and more visible from the tee.

Raising the greenside timber edge of the drainage channel would make it more visible from the fairway landing area.

A larger green complex will be constructed with well-guarded pin positions. Bold bunkering on the left side of the green will encourage golfers to aim right, hopefully diverting them away from the short game area.





## HOLE 9 – PROPOSAL

Build new green complex with larger putting surface and more pinnable areas

Extend fairway towards the drainage ditch

Reshape fairway bunker to make it more visible





**HOLE 9 - PROPOSED GREEN**





## Hole 10

A short par-4 features a pond situated to the right side of the tee complex. A single bunker on the left side of the fairway guards the landing area at approximately 200 yards from the main tee. The small green complex is protected by two bunkers, one at the front left and one at the front right.

## Design Proposal

The existing fairway bunker would be reshaped to make it more imposing. A second fairway bunker would be created on the right, approximately 25-30 yards closer to the green, to challenge the longer hitters attempting to reach the green.

Instead of having two bunkers in front, the green would be better served by a single, more prominent bunker that protects a larger portion of the green surface.



## HOLE 10 – PROPOSAL

Reshape left greenside bunker and remove right greenside bunker

Create new fairway bunker on right side of the fairway

Reshape fairway bunker to make it more visible and bold





## HOLE 10 - PROPOSED APPROACH





## Hole 11

A long par-3 that plays over a valley and a drainage channel. The round-shaped green is protected by bunkers at the front left and front right.

## Design Proposal

The green surface is relatively small for such a long par-3. It could be extended all around, and the front right of the green could be opened up by moving the right-side bunker further along the green to protect a back right pin position. The left greenside bunker would be enlarged and made much more imposing.

Additionally, the bridge crossing will be repaired, and the path leading up to the green will be leveled and resurfaced.



## HOLE 11 - PROPOSAL

New greenside bunkering layout

Path to be resurfaced

Bridge to be repaired







## HOLE 11 - PROPOSED TEE SHOT





## Hole 12

A medium-length par-4 hole that faces significant drainage issues along the right side, resulting in the closure of part of the fairway during winter months. Two penal bunkers are located equidistant from the tee, one on the left and one on the right, at approximately 240 yards. An additional bunker on the right is positioned around 290 yards from the back tee to challenge more skilled golfers. The green complex is defended by two staggered bunkers, one on the left and one on the right. However, they are both detached from the putting surface.



## Design Proposal

The first fairway bunker on the right will be removed to make the landing area less penal. The second fairway bunker will be made more visible and imposing to challenge the better golfers. The greenside bunkering will be refreshed and brought closer to the green surface to better defend the pin positions.



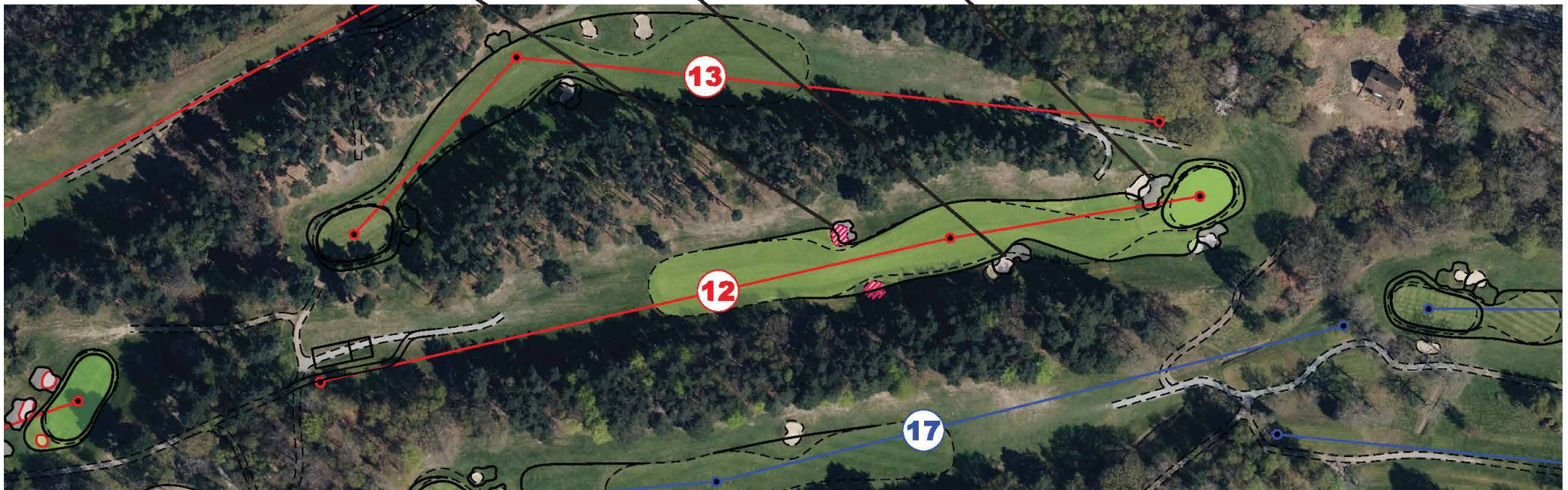
## HOLE 12 – PROPOSAL



Reshape greenside bunkers to make them more visible and better defend pin locations

Reshape fairway bunkers beyond landing area to challenge long hitters

Remove bunkers short of the main landing area





## HOLE 12 - PROPOSED TEE SHOT





## Hole 17

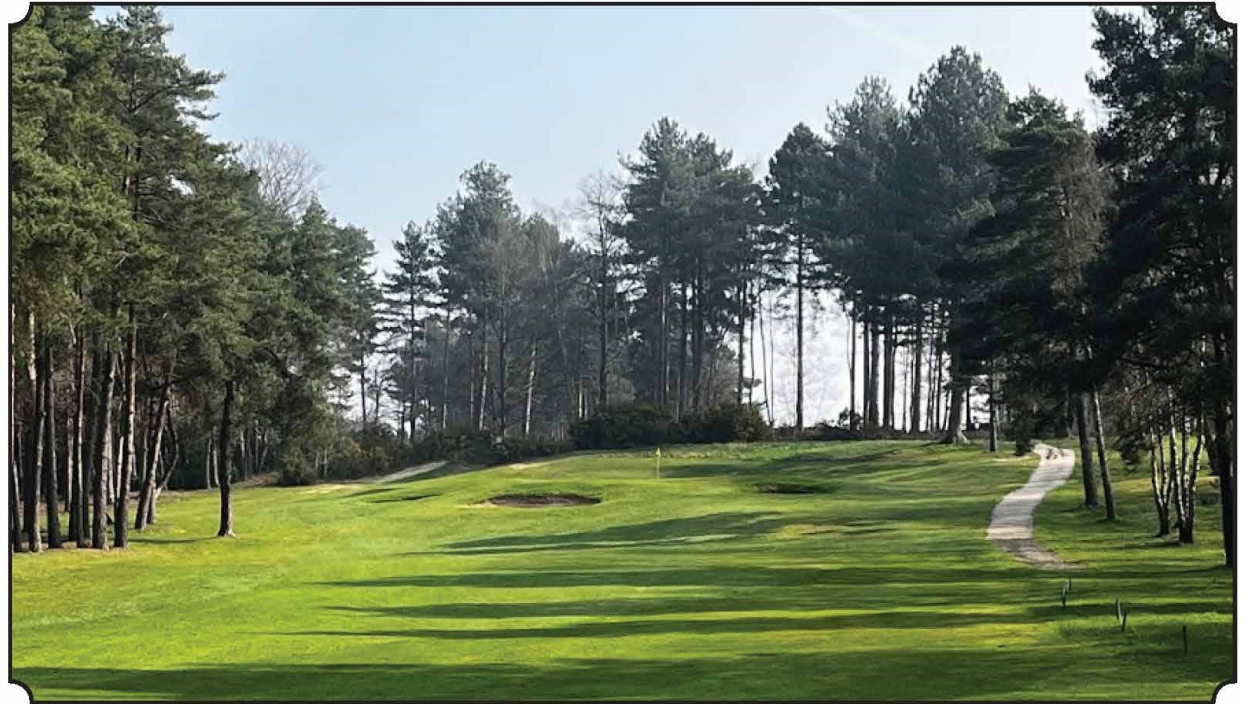
A mid-length par-4 that climbs steeply uphill to a green perched on a ridge.

Despite its significant slope, the fairway tends to be quite wet and would benefit from additional drainage.

The green is protected by three small pot bunkers situated into the slope below it.

## Design Proposal

The greenside bunkers will be reshaped and relocated to enhance their prominence and allow for an extension of both the approach and the green, making them more visible.



### HOLE 17 - PROPOSAL

Bunker positions adjusted and  
green approach extended





## HOLE 17 - PROPOSED APPROACH





## Hole 18

The finishing hole is a medium-length par-5. The tee shot requires a long carry over a valley, a small stream, and a large expanse of rough to reach the fairway. Three bunkers are positioned on the outside of the hole to catch anyone who fades or slices the ball, but the hole sets up for a draw off the tee down the inside of the dog-leg. Unless a golfer is long enough to reach the green in two, the second shot is simply a layup to an open section of fairway with no bunkering or strategic challenges. The large double green is guarded by two greenside bunkers, one at the front left and one at the front right.

## Design Proposal

To reduce the excessive carry required from the tee, we propose extending the start of the fairway closer to the tee.

We recommend removing the first fairway bunker on the right to create a more generous landing area for shorter hitters. Then, we would reshape the remaining bunkers to make them more imposing for longer hitters.

A new fairway bunker would be added short of the green to add challenge and interest for golfers laying up with their second shot.

Lastly, we plan to relocate the greenside bunkers closer to the green surface to better protect various pin positions.





## HOLE 18 - PROPOSAL

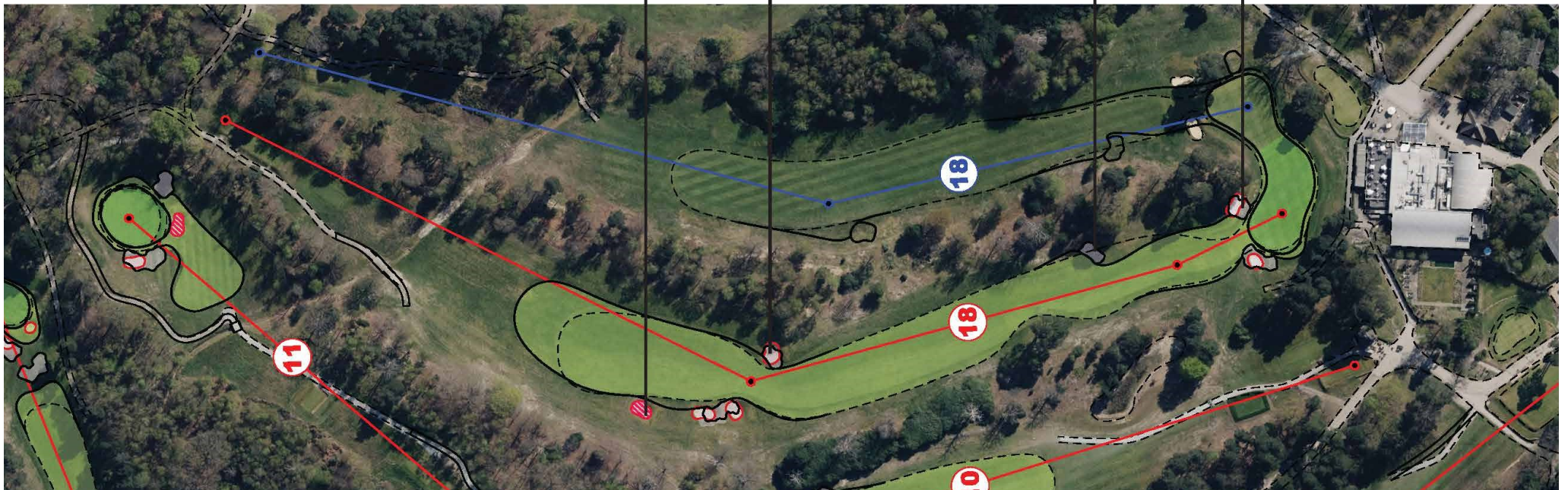


Reshaped greenside bunkers

New bunker by second landing area

Landing area bunkers reshaped

Remove the bunker short of the landing area





**HOLE 18 - PROPOSED GREEN APPROACH**





## HOLE 18 - PROPOSED GREEN APPROACH





**EUROPEAN  
GOLF DESIGN**

[www.egd.com](http://www.egd.com)