



Membership

@foxhillssurrey

#whereyoubelong



Welcome To Foxhills

Set in 400 acres of pristine countryside, and just 25 miles from London city centre, Foxhills has been Surrey's favourite playground for over forty years.

From the early days as just a golf club, to today's exclusive country club offering golf, leisure, spa, racquets, cycling and more, there really is something for everyone at Foxhills.



Our History

The mercurial 18th century politician Charles James Fox came to live in the area in the 1780's with his mistress, and former courtesan, Elizabeth Armistead. A brilliant young parliamentarian (MP for Midhurst aged just 19), Fox was a passionate orator with an appetite for gambling and the high life.

Up until the early 19th century, the area known today as Foxhills, was part of the Botleys estate. The land was owned by Sir Joseph Mawbey, a close friend of Fox. On the death of Mawbey in 1817, the estate was broken up with Sir Joseph's son-in-law, John Ivatt-Briscoe, a successful lawyer and local MP, buying the land.



In 1840 Ivatt-Briscoe commissioned the architect George Basevi (cousin to Benjamin Disraeli, twice former PM), whose work included Ely Cathedral in Cambridge, to build the current Manor House using Bath stone and Suffolk brick.

In the 1870's, the estate was passed to a distant relative of Ivatt-Briscoe, General Hutton. A veteran of the Zulu and Boer wars, Hutton took an active role in parish life and invited the families of men who fell under his command to play in the grounds during their holidays.

After serving as a convalescent home for wounded officers during the Great War, the estate was sold to the Borthwicks, a successful merchant family, in the 1920s. They ran the estate and farm in a manner unchanged since Ivatt-Briscoe, with a staff totaling 15. During WW2, the family energetically turned the farm (now the site of the Bernard Hunt course) over to the 'Dig for Victory' campaign.



By the 1960's the estate had fallen into decline, and it was sold to Aer Lingus; the National airline of Ireland. The airline opened two golf courses in 1975, although it was not the immediate success the company had hoped for.

As a result, Foxhills was sold for £1.4 million in 1983 to Pam and Ian Hayton. The couple modernised the club and put an emphasis on families, giving equal status to women which was quite unusual in the early 1980's. In 2010, their son Marc took over as Managing Director and continues to grow Foxhills' reputation as Surrey's leading club and resort.

With a growing membership, the love of sport, food, wine and gracious living which Charles James Fox displayed in the 18th century lives on.

A Note From Our Owner

A colleague once described Foxhills as a village; with its mix of buildings and mix of people that is exactly what it is. A vibrant, friendly place.

Like a village, some members throw themselves into club life: attending events, playing for the teams or starting a new society; while others simply enjoy the club with family and friends. It is whatever you choose.

Since my family arrived at the club in 1983, it has given us so much pleasure; working with remarkable people, meeting members that have become old friends and seeing new faces.

I hope Foxhills comes to mean as much to you.

Enjoy.

Marc Hayton
Owner and CEO





The Pavilion

Our newly-opened £7million leisure facility, the Pavilion, has already proven to be an incredible addition to Surrey's leading club and resort.

Designed entirely for families, by Michaelis Boyd (the esteemed architects behind Soho Farmhouse), the Pavilion includes a 16m indoor and 25m outdoor pool (open all year round), 3 fitness studios, a children's games room, a soft-play area and crèche, plus a healthy family restaurant; Flo's.



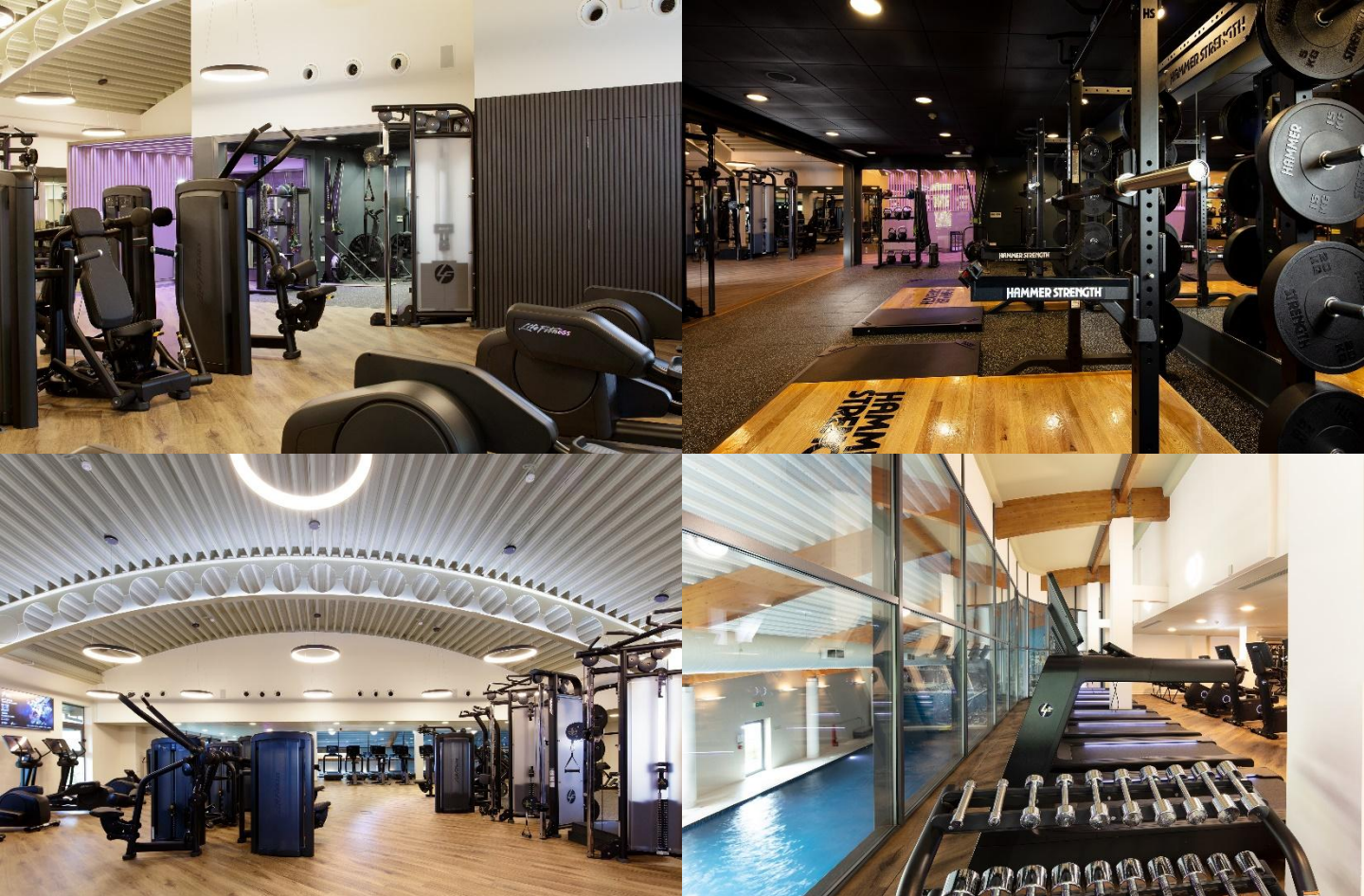
Racquets

Described as a 'mix of tennis and squash', Padel tennis is one of the fastest-growing sports worldwide. Thanks to the smaller size of the court, Padel is easy to pick up and incredibly social.

Members of the club can now enjoy 3 Padel tennis courts and 2 Pickleball courts – all of which are floodlit and playable year-round, both socially and competitively.

We also have 9 tennis courts, across 3 varying surfaces: 4 synthetic clay, 4 acrylic and 1 all-weather.

Our racquets section is open to Full member, Country Club members and all under-18's. Join in with our regular coaching, roll-ups and team matches.



The Gym

Our gym transformation includes the launch of cutting-edge Symbio cardio equipment from Life Fitness, with Foxhills becoming the first venue in the UK to install this technology.

Symbio is an innovation from Life Fitness which sets a new benchmark for cardio tech in the UK, providing a truly personalised and engaging experience, using advanced biomechanics for a full sensory fitness journey. The intuitively responsive technology utilises the body's natural motion to enhance the user's fitness experience, with on-demand coaching, fitness content and entertainment within the interactive screens on each machine.

In addition to new layout, décor and design, the refurbished gym includes a bigger free weights area, additional squat rack and stretching spaces, as well as more resistance machines.



Work From Foxhills

What better way to start the day than an early morning swim, a quick 9-holes, or a calorie-burning fitness class, followed by breakfast in one of our three fabulous restaurants?

With the recent change in working patterns affecting us all, we understand the varying needs of all our members. We want to ensure the club remains a prominent place in all aspects of your life. Think of us like an extension of your home.

With free Wi-Fi throughout, and a range of meeting rooms to hire for more private affairs, there's plenty of space for catching up on emails, hosting that all-important video call, or holding your quarterly team meeting.



The Yoga Cabin

Built from sustainable, natural timber, our unique woodland-inspired Yoga Cabin is the perfect place to connect your mind and body.

Discover your inner peace and improve your flexibility through our wide range of wellness classes, including Yoga (in various forms), Pilates, Reformer Pilates, Tai Chi and Guided Breathwork.



The Manor House

Cosy up by the fireplace in winter or sip champagne on a summer's day. The Manor Lounge is located in our historic Manor House, which overlooks our 9-hole Manor course.

Whether enjoying a classic British afternoon tea, catching up on emails over a morning coffee or indulging in a night cap, cocktail or cigar in the evening, the Manor Lounge is the perfect country retreat.



The Woodland Trail

Starting from the Pavilion, our woodland trail (which loops around the entire estate) is the perfect place to keep active with the ones you love.

Plus, for our younger members, we have a woodland-inspired adventure playground at the start of the trail.

With 7 different routes along the way (varying from 0.8 to 3.2km), put on your walking boots, grab a coffee to-go and relax in nature. With an abundance of wildlife along the way, we know you'll love it!





Membership Benefits

Upon joining Foxhills, you will receive a range of membership benefits, depending on your chosen category:

- 15% off all food and drink across the club
- 10% off all items in the Golf Shop (excluding hardware)
- 20% off all treatments booked in the healthSpa
- Members guest green fee rates (between £30-£75)
- Preferential rates on golf buggies and electric trolley hire
- Preferential rates on our 16-bay floodlit Trackman driving range
- Preferential rates on golf lessons with our PGA professionals
- Preferential rates on racquets coaching with our LTA professionals
- Preferential rates on bedrooms, meeting room hire, golf days, private dining, and on private social events (e.g. birthdays or anniversaries)
- Access to our floodlit short game area; The Practice Den
- Access to our reciprocal golf agreements through IMG Prestige
- Unlimited golf at our sister club Farleigh
- A 1-hour gym induction, devoted to your health and well-being
- Access to member only gym content and features through the 'Life Fitness Connect' app, allowing you to track your workouts and put together fitness plans
- Access to member-led clubs (including cycling, running, table-tennis, business networking, book and bridge)
- Preferential rates on our Ofsted registered crèche



Family Membership

Create special memories as a family, either by sharing a similar passion or enjoying different experiences in a safe and welcoming environment.

Your club should be a place for all the family to enjoy. Whether it's golf, fitness, swimming, racquets, studio classes, arts and crafts or simply walking our woodland trail, we understand how precious time spent with loved ones is. Make Foxhills your home away from home and set aside time with one another.

Our Family memberships are entirely bespoke, meaning you simply combine any number of individual memberships based on which parts of the club each family member requires.

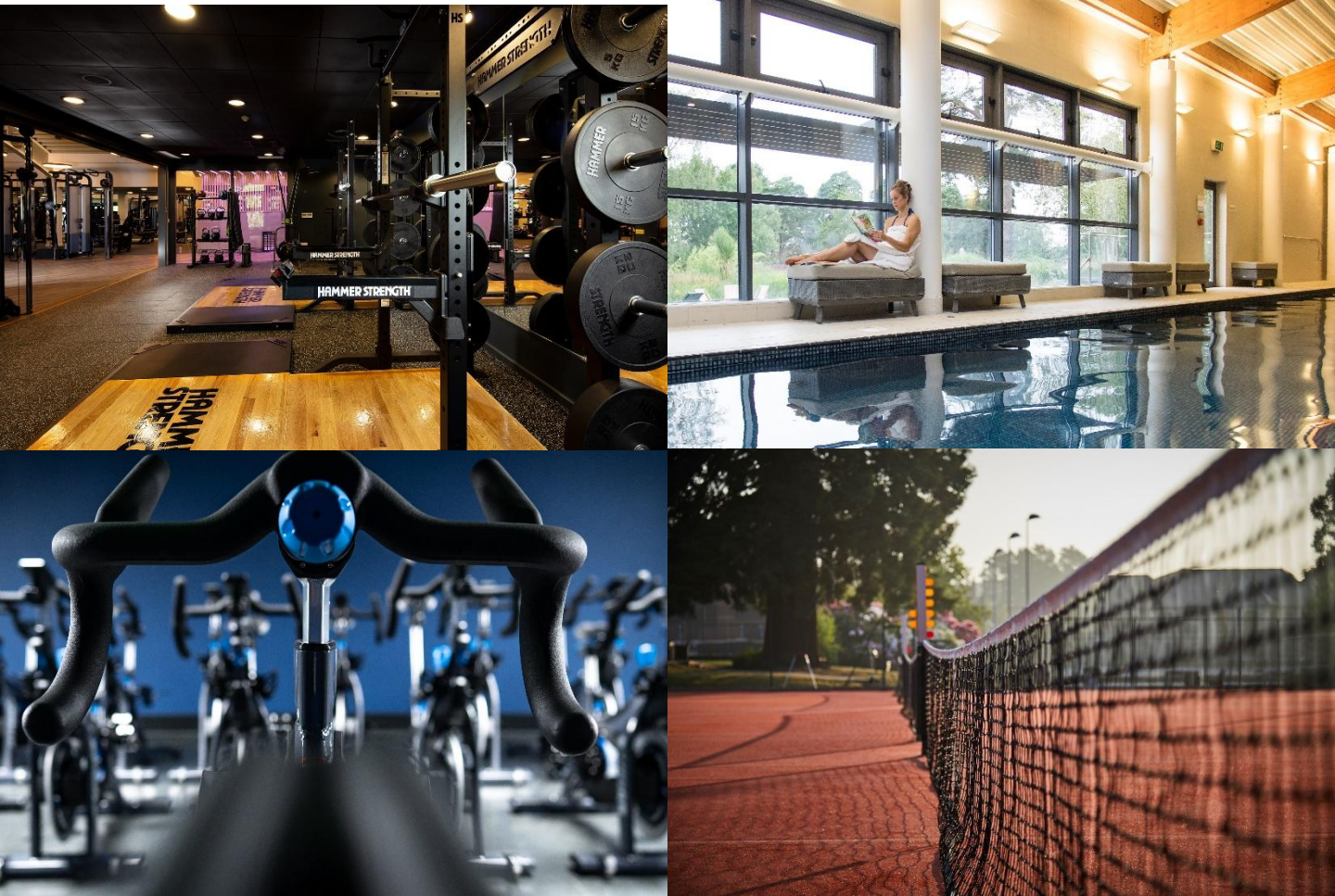


Full Membership

The ultimate Foxhills membership experience grants access to everything on offer at Surrey's leading club.

With the option of a 5 or 7-day golf membership included, Full membership offers unrivalled access to our family leisure facility; The Pavilion, our award-winning healthSpa including gym and adults-only swimming pool, our spa garden, all our studio fitness-classes, our woodland-inspired Yoga Cabin and our range of multi-surfaced racquets courts.

Whether it's for health and exercise, to pursue a favourite sporting passion or to increase your social circle, a Full membership at Foxhills really is a life-enhancing investment.



Country Club Membership

Our Country Club membership is the perfect way to keep fit, unwind, de-stress and enjoy unlimited use of all the award-winning leisure facilities at Surrey's leading club.

Membership includes access to our family leisure facility; The Pavilion, our award-winning healthSpa including gym and adults-only swimming pool, our spa garden, all our studio fitness classes, our woodland-inspired Yoga Cabin and our range of racquets courts. Plus, you'll receive access to our par-3 9-hole Manor golf course and our floodlit short game area; The Practice Den.

Join in with all our member-led clubs, including cycling, running, table-tennis and bridge.



Under 18's Membership

We've created a range of age-related categories to tailor activities to your children's needs. We also believe that there should be no barriers to your child having fun with others, so all under 18's are given access to all the facilities across the club (appropriate to their age).

Our brand-new family leisure facility, The Pavilion, features an indoor and outdoor swimming pool, a games room, a soft-play area and a crèche.

Through our extensive junior activity timetable, the club's younger members have access to a range of classes, including swimming, golf, racquets, judo, dance, plus arts and crafts.



Associate Golf Membership

Want to join Foxhills, but don't play enough golf to justify our Full Membership? Our Associate Golf membership is aimed at the infrequent golfer, who still wants to be attached to Surrey's leading club.

You'll receive 12 rounds per year to be played on either of our 2 Championship courses. Rounds can be played anytime midweek and after 11am at weekends. Plus, you can play unlimited golf on our par-3 9-hole Manor course.

As an Associate member, you can play in selected competitions and have access to all our practice facilities.

Already a member of a local club? Why not join Foxhills as a second-club membership?



Corporate Golf Membership

Looking to entertain clients, improve employee well-being or simply work from Foxhills?

Our range of Corporate golf memberships have been specifically designed with flexibility in mind, meaning anyone associated with your company can use the membership at any one time.

Simply choose how many rounds of golf you'd like per year, from our 3 options listed.

With great transport links to London city centre and Heathrow airport, your business needs can be met in style, ensuring privacy and productivity sit side by side.

Full 7-Day

| Category | Joining Fee | Subscription | Golf | Gym | Swimming | Classes | Racquets |
|------------|-------------|--------------|------|-----|----------|---------|----------|
| Individual | £2500 | £5115 | ✓ | ✓ | ✓ | ✓ | ✓ |
| Partner | £2500 | £3965 | ✓ | ✓ | ✓ | ✓ | ✓ |
| 36-40 | £2500 | £4195 | ✓ | ✓ | ✓ | ✓ | ✓ |
| 31-35 | £2500 | £3385 | ✓ | ✓ | ✓ | ✓ | ✓ |
| 26-30 | £2500 | £2705 | ✓ | ✓ | ✓ | ✓ | ✓ |
| 22-25 | £2500 | £2125 | ✓ | ✓ | ✓ | ✓ | ✓ |
| 19-21 | £2500 | £1495 | ✓ | ✓ | ✓ | ✓ | ✓ |

Full 5-Day

| Category | Joining Fee | Subscription | Golf | Gym | Swimming | Classes | Racquets |
|------------|-------------|--------------|------|-----|----------|---------|----------|
| Individual | £2500 | £4095 | ✓ | ✓ | ✓ | ✓ | ✓ |
| Partner | £2500 | £3195 | ✓ | ✓ | ✓ | ✓ | ✓ |

*5-Day to play golf anytime Monday-Friday, but not at weekends

Country Club

| Category | Joining Fee | Subscription | Golf | Gym | Swimming | Classes | Racquets |
|------------|-------------|--------------|------|-----|----------|---------|----------|
| Individual | £600 | £2720 | | ✓ | ✓ | ✓ | ✓ |
| Partner | £600 | £2160 | | ✓ | ✓ | ✓ | ✓ |
| 36-40 | £600 | £2400 | | ✓ | ✓ | ✓ | ✓ |
| 31-35 | £600 | £2090 | | ✓ | ✓ | ✓ | ✓ |
| 26-30 | £600 | £1820 | | ✓ | ✓ | ✓ | ✓ |
| 22-25 | £600 | £1600 | | ✓ | ✓ | ✓ | ✓ |
| 19-21 | £600 | £1435 | | ✓ | ✓ | ✓ | ✓ |

Please note: all subscriptions are taken pro-rata until 30th April 2026 and are payable up front with any debit/credit card

All membership categories include access to our par-3 9-hole Manor Golf course

Under 18's

| Category | Joining Fee | Subscription | Golf | Gym | Swimming | Classes | Racquets |
|----------|-------------|--------------|------|-----|----------|---------|----------|
| 16-18 | £300 | £855 | ✓ | ✓ | ✓ | ✓ | ✓ |
| 12-15 | £300 | £735 | ✓ | | ✓ | | ✓ |
| 6-11 | £300 | £695 | ✓ | | ✓ | | ✓ |
| 3-5 | £300 | £565 | ✓ | | ✓ | | ✓ |
| 0-2 | £300 | £205 | ✓ | | ✓ | | ✓ |

Associate Golf

| Category | Joining Fee | Subscription | Golf | Gym | Swimming | Classes | Racquets |
|------------|-------------|--------------|------|-----|----------|---------|----------|
| Individual | £700 | £1270 | ✓ | | | | |

Corporate Golf

| Category | Joining Fee | Subscription | Golf | Gym | Swimming | Classes | Racquets |
|---------------|-------------|--------------|------|-----|----------|---------|----------|
| 25 x 4-balls | £3500 | £8400 | ✓ | | | | |
| 50 x 4-balls | £3500 | £15750 | ✓ | | | | |
| 100 x 4-balls | £3500 | £28350 | ✓ | | | | |
| 150 x 4-balls | £3500 | £39800 | ✓ | | | | |

*Corporate Golf to play anytime Monday-Friday, but not at weekends. Access to the leisure facilities is exclusively for individual members only

Please note: all subscriptions are taken pro-rata until 30th April 2026 and are payable up front with any debit/credit card

All membership categories include access to our par-3 9-hole Manor Golf course





Foxhills, Ottershaw, Surrey, KT16 0EL

membership@foxhills.co.uk

www.foxhills.co.uk

[@foxhillssurrey](https://www.instagram.com/foxhillssurrey)

[@foxhillssurrey](https://www.instagram.com/foxhillssurrey)

[#wheretheyoubelong](https://www.instagram.com/foxhillssurrey)